

July 7, 2015

Mr. Ed Rawski, P.E.
Pennsylvania Department of Environmental Protection
Bureau of Waste Management
909 Elmerton Avenue
Harrisburg, PA 17110-8200

RE: Creswell Landfill GCMP; BWM Permit #100008

Dear Mr. Rawski:

Submitted herein is the data associated with the Gas Control and Monitoring Plan (GCMP) for the above referenced facility for the 2nd Quarter 2015.

Attached, and included by reference are the following:

- **Attachment A**

Four (4) sheets containing a total of eleven (11) charts which depict historic results for the peripheral landfill gas monitoring wells and probes. As indicated, we continue to measure 0% methane in landfill perimeter locations.

- **Attachment B**

Contains quarterly results of the site perimeter locations monitored for percent L.E.L.

Creswell Landfill GCMP; BWM Permit #100008
July 7, 2015
Page 2 of 2

In summary:

Field Data

- Samples taken from wells were analyzed for methane, carbon dioxide, oxygen, and “balance” (usually inferred to mean nitrogen) gases. “Balance” results, as always, are reported as a calculation based upon the measured values of the three (3) other landfill gas constituents.

We will continue quarterly GCMP monitoring and reporting with our next routine event (3rd Quarter 2015) currently scheduled to be completed in September. Feel free to call if you have any questions or comments.

Sincerely,



Daniel A. Brown
Environmental & Sustainability Coordinator

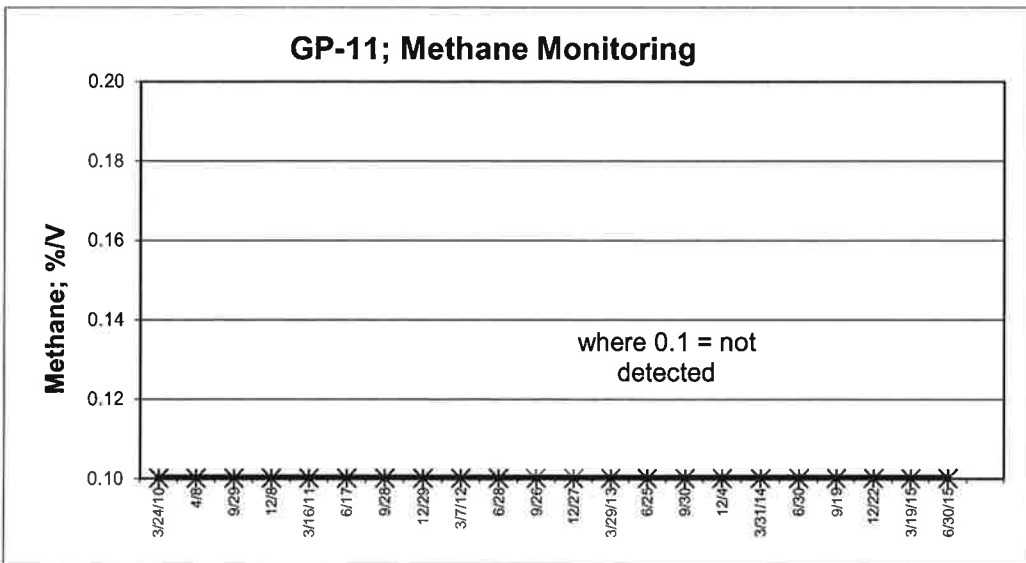
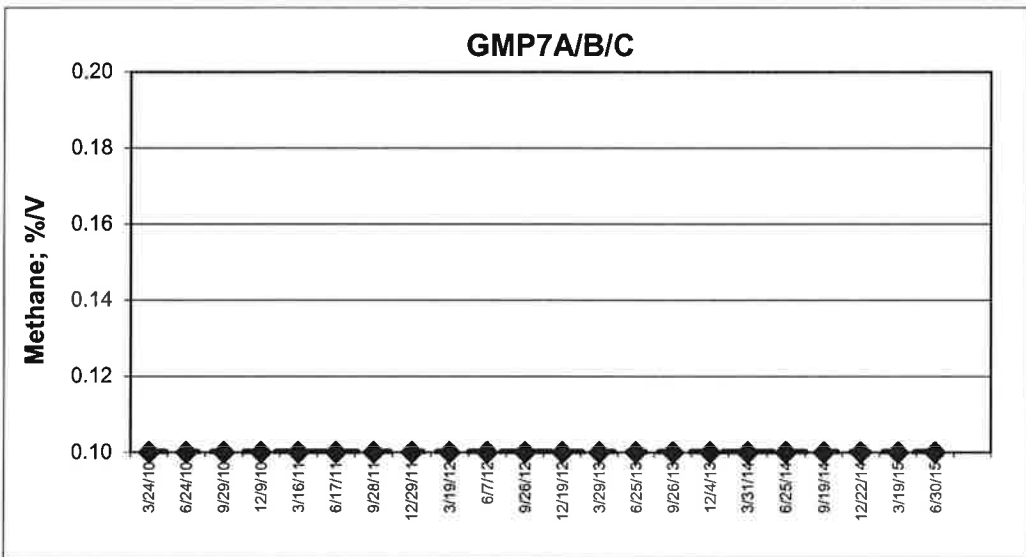
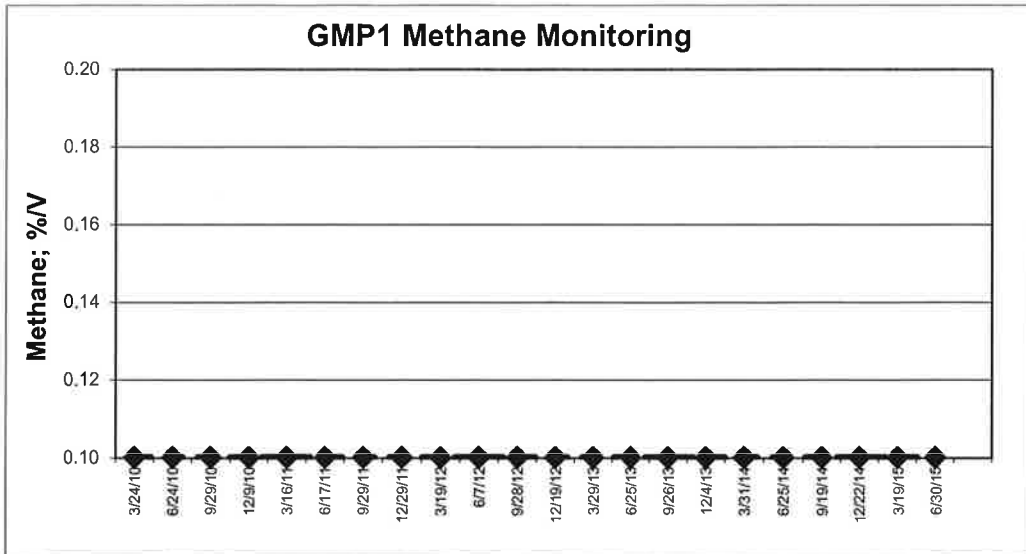
Enclosures

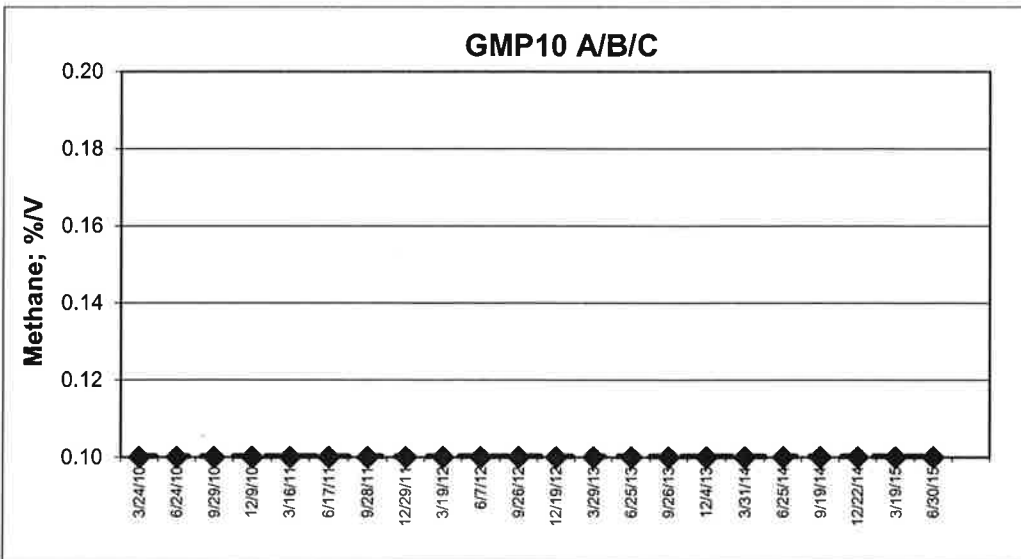
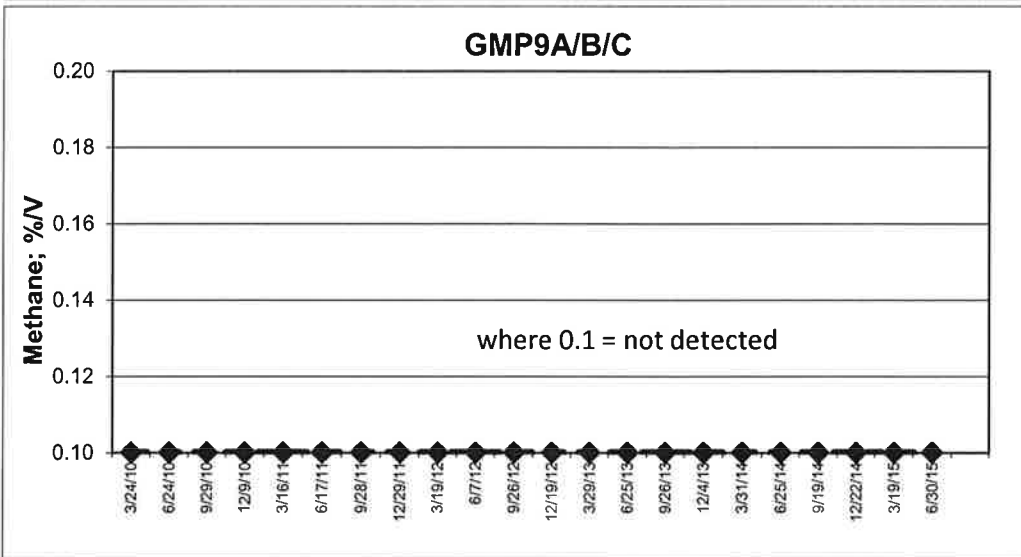
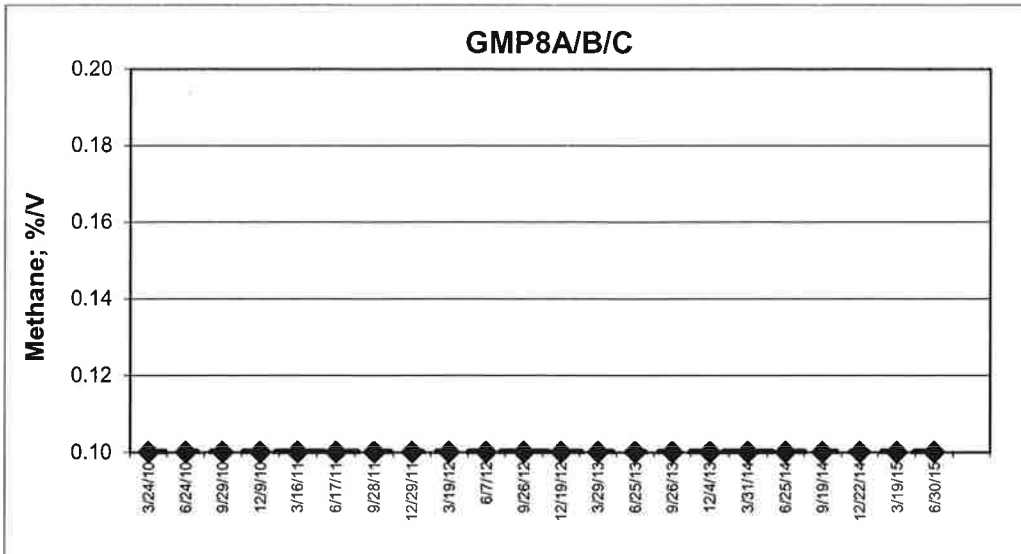
cc: Bob Zorbaugh
Brooks Norris (w/enc.)
Bob Eshbach (w/enc.)
Jeff Musser (w/enc.)
Randy Weiss (PaDEP-Lanc.)

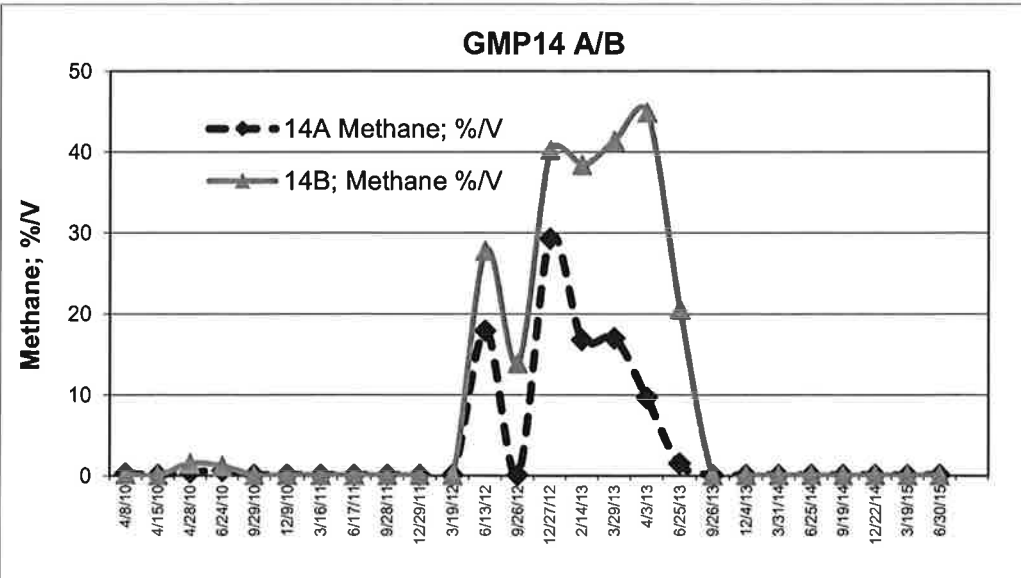
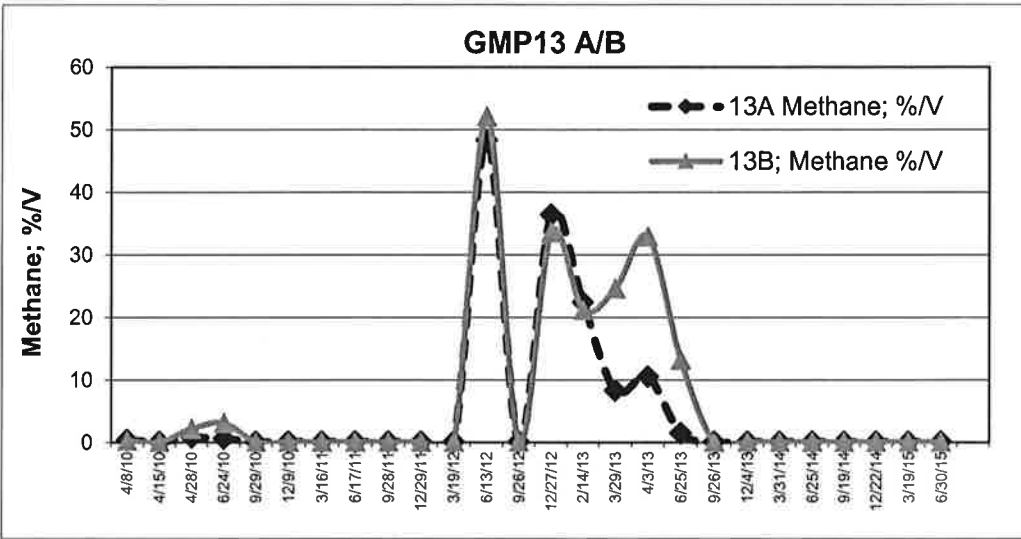
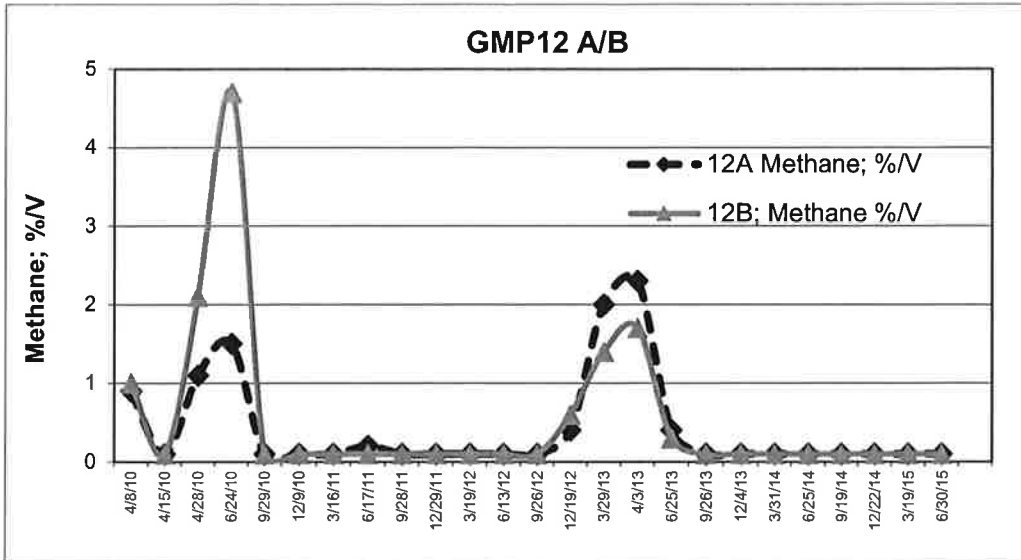
S:\BKNWORD\CWLF\FCW LFG QTLY MONITORING LETTER.DOCX

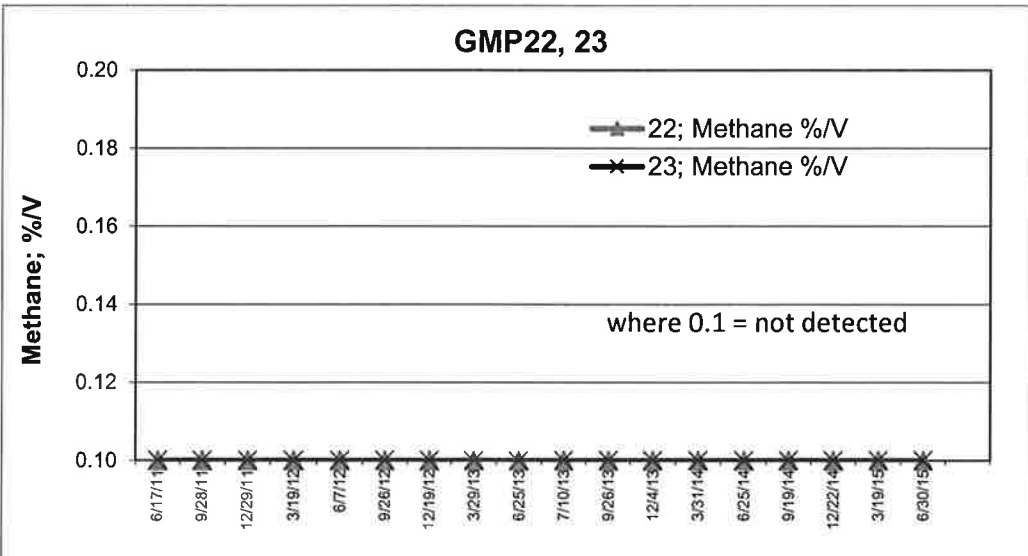
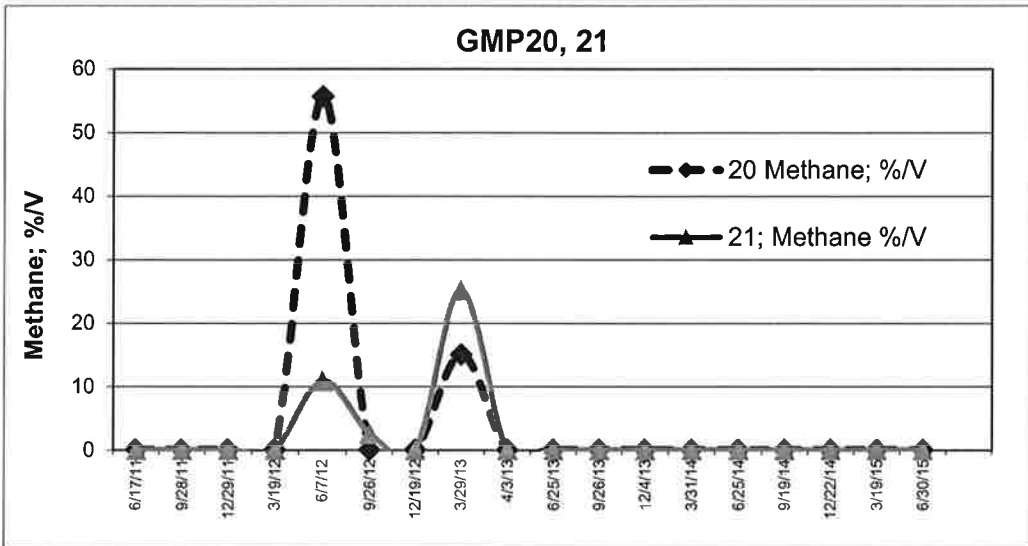
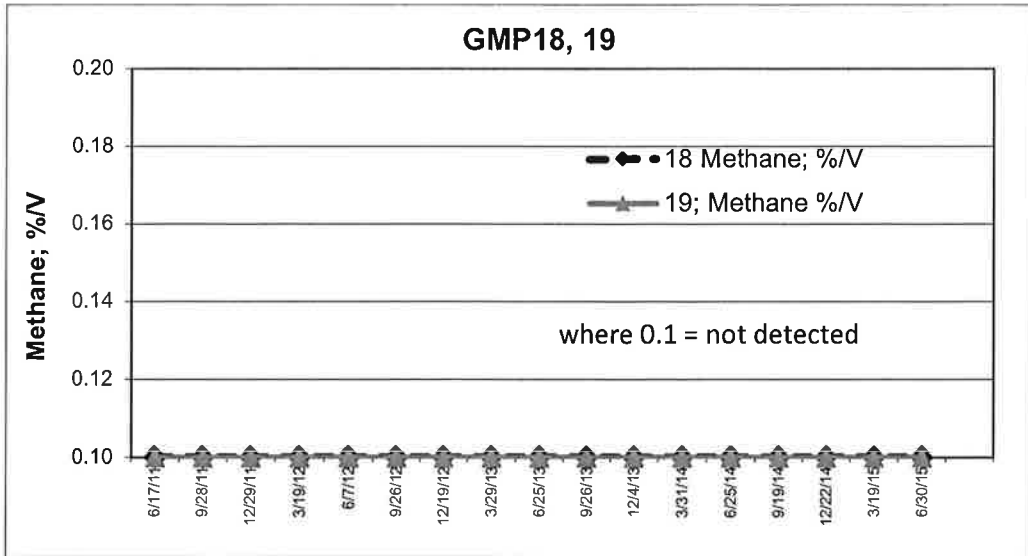
ATTACHMENT A

Graphs; Historic Results
Peripheral LFG Monitoring Probes









ATTACHMENT B

Quarterly Results
Percent L.E.L. Monitoring

CRESWELL METHANE MONITORING PROGRAM
SAMPLE POINT INSPECTION FORM

SAMPLE POINT NUMBER	DESCRIPTION	METHANE LEVEL (as % LEL)			
		DATE 3/18/15	DATE 6/24/15	DATE	DATE
1 to 15	GP WELLS	not included with this monitoring			
16	CONTROL BUILDING LAB	0	0		
17	CONTROL BUILDING COMPRESSOR ROOM	0	0		
18	CONTROL BUILDING LOCKER ROOM	0	0		
19	NTHW PIT	no longer exists			
20	OTHW PIT	0	0		
21	LTS AERATION PIT AT WEATHER STATION #1	0	3		
22	LTS AERATION PIT AT WEATHER STATION #2	0	4		
23	LTS WIRE TRENCH VENTS 1	0	0		
24	LTS WIRE TRENCH VENTS 2	0	0		
25	LTS WIRE TRENCH VENTS 3	no longer exists			
26	PUMP HOUSE	0	0		
27	PUMP HOUSE WET WELL	0	0		
28	MH #1	12	6		
29	MH #2	5	6		
30	INLET; STREAM R PIPE	0	0		
31	OUTLET; STREAM R PIPE	0	0		
32	UPPER END; RAVINE LEACHATE COLLECTION C.O.	no longer exists			
33	SEE MAP	0	0		
34	SEE MAP	0	0		
35	SEE MAP	0	0		
36	SEE MAP	0	0		
37	SEE MAP	0	0		
38	SEE MAP	0	0		
39	SEE MAP	0	0		
40	SEE MAP	0	0		
41	SEE MAP	0	0		
42	SEE MAP	0	0		
43	SEE MAP	0	0		
44	SEE MAP	0	0		
45	SEE MAP	0	0		
46	SEE MAP	0	0		
47	SEE MAP	0	0		
48	SEE MAP	0	0		
49	SEE MAP	0	0		
50	SEE MAP	0	0		
	Atmospheric Pressure (in. Hg)	29.58"	29.51"		
	Air Temperature (Deg. C)	0.8 °C	20.8°C		

Revision Date: June 2011

Revisions: deleted points 62 to 66; added points 81 through 86

page 1 of 2

CRESWELL METHANE MONITORING PROGRAM
SAMPLE POINT INSPECTION FORM

SAMPLE POINT NUMBER	DESCRIPTION	METHANE LEVEL (as % LEL)			
		DATE 3/18/15	DATE 6/24/15	DATE	DATE
51	LTS DISCHARGE MH #1	0	0		
52	LTS DISCHARGE MH #2	0	0		
53	DRAIN PIPE UNDER RAVINE PHASE II	0	0		
54	OLD SCALE HOUSE PIT	no longer monitored			
55	NEW SCALE HOUSE PIT	0	0		
56	LAGOON LINER BALLOON	NA	NA		
57	LEACHATE PIPE LOWER END OF RAVINE	capped; no longer monitored			
58	CWOB092W	0	0		
59	CWOB093A	0	0		
60	CWOB093B (aka CWMP016W)	0	0		
61	CWOB080W (formerly CWMP006W)	0	0		
62	CWGMP002; Gas monitoring probe	abandoned for Soil Borrow Project stockpile			
63	CWGMP04A; Gas monitoring probe				
64	CWGMP04B; Gas monitoring probe				
65	CWGMP06A; Gas monitoring probe				
66	CWGMP06B; Gas monitoring probe				
67	CWGMP08A; Gas monitoring probe	0	0		
68	CWGMP08B; Gas monitoring probe	0	0		
69	CWGMP08C; Gas monitoring probe	0	0		
70	CWGMP10A; Gas monitoring probe	0	0		
71	CWGMP10B; Gas monitoring probe	0	0		
72	CWGMP10C; Gas monitoring probe	0	0		
73	CWO100DW	0	0		
74	CWO100SW	0	0		
75	CWGMP12A; Gas Monitoring Probe	0	0		
76	CWGMP12B; Gas Monitoring Probe	0	0		
77	CWGMP13A; Gas Monitoring Probe	0	0		
78	CWGMP13B; Gas Monitoring Probe	0	0		
79	CWGMP14A; Gas Monitoring Probe	0	0		
80	CWGMP14B; Gas Monitoring Probe	0	0		
81	CWGMP018; Gas Monitoring Probe	0	0		
82	CWGMP019; Gas Monitoring Probe	0	0		
83	CWGMP020; Gas Monitoring Probe	0	0		
84	CWGMP021; Gas Monitoring Probe	0	0		
85	CWGMP022; Gas Monitoring Probe	0	0		
86	CWGMP023; Gas Monitoring Probe	0	0		

Revision Date: June 2011

Revisions: deleted points 62 to 66; added points 81 through 86

page 2 of 2