



March 16, 2012

Mr. Ed Rawski, P.E.
Pennsylvania Department of Environmental Protection
Bureau of Waste Management
909 Elmerton Avenue
Harrisburg, PA 17110-8200

RE: Frey Farm Landfill; Landfill Gas Monitoring; BWM Permit #101389
1st Quarter 2012 Perimeter %LEL LFG Report

Dear Mr. Rawski:

In accordance with the Municipal Waste Management Regulations (Section 273.292 – “Gas Control and Monitoring”), the Lancaster County Solid Waste Management Authority (LCSWMA) continues quarterly monitoring of methane gas levels at the perimeter of the above referenced facility.

LCSWMA personnel completed monitoring of sample points along the facility boundary and in adjacent buildings and structures on March 15, 2012. The results of that monitoring are attached. You will note that methane was detected in only two (2) leachate collection manholes. No sampled peripheral locations, structures, or landfill gas monitoring probes were found to contain landfill gases.

We will continue to submit the results from this ongoing quarterly monitoring program. Please feel free to contact me if you have any questions or require additional information in any regard.

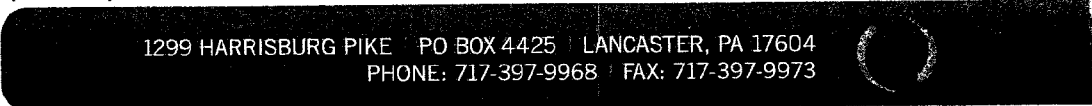
Sincerely,

Brooks K. Norris
Senior Manager, Technical Services

Attachment

cc: Bob Zorbaugh
Randy Weiss (PADEP)
cc/att: Jeff Musser
Bob Eshbach
Emily Kauffman
William Borst (PaDEP)

www.lcswma.org



1299 HARRISBURG PIKE PO BOX 4425 LANCASTER, PA 17604
PHONE: 717-397-9968 FAX: 717-397-9973

FREY FARM METHANE MONITORING PROGRAM
SAMPLE POINT INSPECTION FORM

SAMPLE POINT NUMBER	DESCRIPTION	METHANE LEVEL (as %LEL)			
		DATE 3/15/12	DATE	DATE	DATE
1	PUMP STATION; AIR SPACE	0			
2	PUMP STATION; STRUCTURE INTERIOR	0			
3	MANHOLE 1S	104			
4,5,6,7	(DELETED)	No Longer Monitored			
8	SEE MAP	0			
9	SEE MAP	0			
10	SEE MAP	0			
11	SEE MAP	0			
12	SEE MAP	0			
13	SEE MAP	0			
14	SEE MAP	0			
15	SEE MAP	0			
16	SEE MAP	0			
17	SEE MAP	0			
18	FFLTP; INFLUENT PIPE GALLEY	0			
19	MANHOLE 2PB	0			
20	MANHOLE 2IA-P	0			
21	MANHOLE 2IB-P	0			
22	NW CELL 2 (SEE MAP)	0			
23	SEE MAP	0			
24	SEE MAP	0			
25	MANHOLE 3A-S	0			
26	MANHOLE 3A-P	0			
27	FFMP005W	0			
28	FFMP013W	0			
29	FFMP016W	0			
30	TRUCKWASH DRAIN PIT	0			
31	MAINTENANCE BUILDING OFFICE	0			
32	MAINTENANCE BUILDING LUNCH ROOM	0			
33	MAINTENANCE BUILDING STORAGE AREA	0			
34	COMPLIANCE BUILDING LAB	0			
35	COMPLIANCE BUILDING OFFICE	0			
36	FFLTP EQ. TANKS METER PIT	0			
37	CELL 1 CLEANOUT	No Longer Monitored			
38	LASA PUMP STATION STRUCTURE INTERIOR	0			
39	LASA PUMP STATION AIR SPACE	0			
40	MANHOLE 4S	0			

Revised Date: 2/11 - Added LFG Probe locations

FREY FARM METHANE MONITORING PROGRAM
SAMPLE POINT INSPECTION FORM

SAMPLE POINT NUMBER	DESCRIPTION	METHANE LEVEL (as %LEL)			
		DATE 3/15/12	DATE	DATE	DATE
41	MANHOLE 4P	0			
42	MANHOLE 5S	0			
43	MANHOLE 5P	0			
44	MANHOLE 5SW	0			
45	MANHOLE 5PB	2			
46	MANHOLE 6S	0			
47	MANHOLE 6P	0			
48	MANHOLE 6-FM	0			
49	FFGMP001	0			
50	FFGMP002	0			
51	FFGMP003	0			
52	FFGMP004	0			
53	FFGMP005	0			
54	FFGMP006	0			
55	FFGMP007	0			
56	FFGMP008	0			
	Atmospheric Pressure	29.63"			
	Air Temperature (Deg. C)	65.0° F			

Revised Date: 2/11 - Added LFG Probe locations